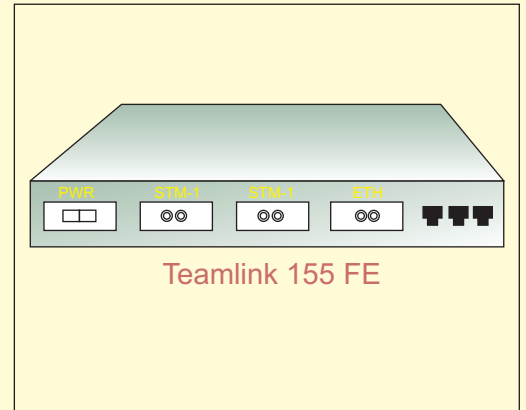


Product Overview :

Teamlink 155 FE is a cost-effective and good-performance product that provides 8/16 E1/T1, 2/4 Ds3, 4/8 ports of 10/100 Base T card as tributary, It delivers various services to the customer premises over STM-1 (155Mbps) optical network.

The Teamlink 155 FE system is the transmission equipment which can provide a flexible and versatile solution to TDM and IP services and use two fiber links for 1+1 auto protection to deliver up to 155Mbps based on customer's application.



Versatile Network Management System :

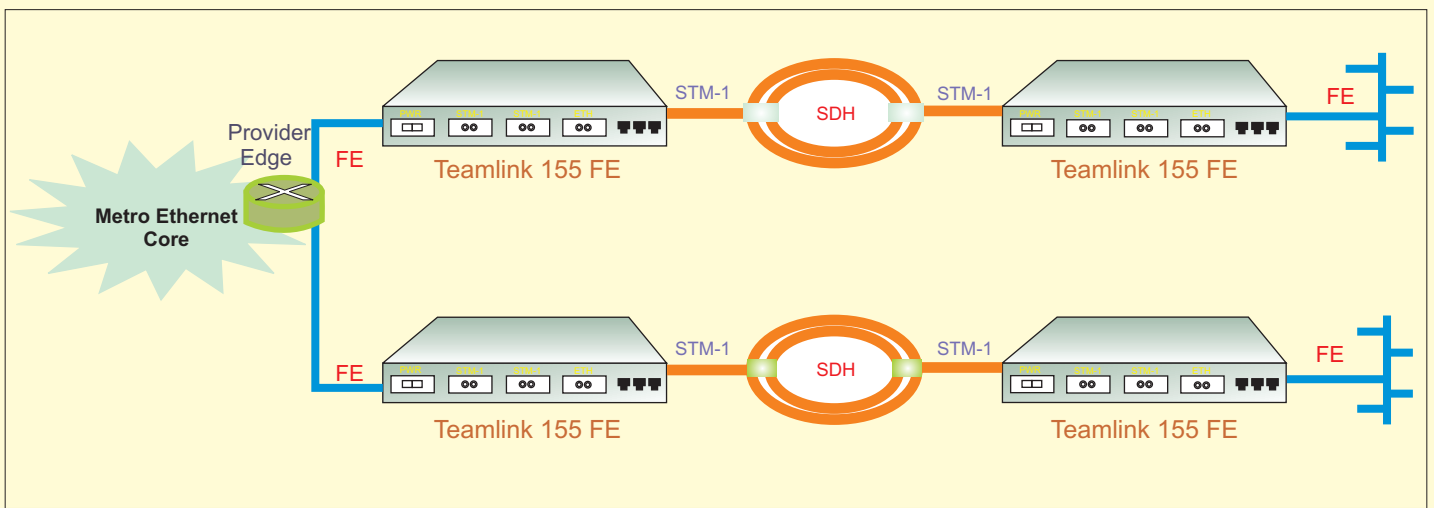
Teamlink 155 FE provides a functional Craft Interface and easy-to use GUI Network Management. Performance indexes are also available for better monitoring. Easy and smooth facilities provide powerful operation and maintenance for both remote and central sites.

Scalability in Ethernet Services :

The Ethernet services is scalable to fit in fields requires by administrators from 2 up to 100Mbps (increased by 2.048Mbps or 1.544Mbps) with GFP, VCAT & Link Capacity Adjustment Scheme (LCAS) to adjust in transmission capacity with hitless traffic for user bandwidth requirement.

Features :

- :: Carry legacy and advanced data services up to 155Mbps through existing optical network.
- :: Provide transparent LAN services with dynamic bandwidth allocation with hitless traffic.
- :: Support Ethernet 802.3x flow control for handling burst Ethernet traffic condition.
- :: Comply with ITU-T G.703 E1/T1 interface
- :: Comply with IEEE 802.3 10/100M Ethernet interface.
- :: Provide craft Interface and SNMP- or Web based GUI network management.
- :: Support optical 1+1 protection switch with superior performance of recovery time
- :: Support power supply redundancy(AC / DC)



LAN Card

* Ports	:	3x 10/100 Mbps TX, and 1x10/100 Mbps Fx
* Bit Rate	:	10/100 Base
* Connectors	:	RJ-45 for 10/100 Base Tx and SC for 10/100 Base Fx
* Optical Interface	:	Ports Wavelength Modulation Connector
		2 1310nm, 1550nm (option) 155.52 Mbps SC
* Power Supply	:	DC AC
		-36V _{DC} to -72V _{DC} (-48V _{DC} nominal) 110 or 230V _{AC} -50Hz
* Power Consumption	:	Watt
		25W
* Timing	:	Sources
		STM-1 link Local oscillator E1 line 2 Mbps external input
* Operation Environment:		Temperature range Humidity
		0°C to 50°C (0°C to 65°C, Optional) 5% - 90%, no condense
* Protection	:	1+1 MSP
		APS < 50ms
* Performance	:	BER
		BER < 10 ⁻¹²
* Management Interface	:	Craft Terminal NMS
		RS 232 DB-9 RJ-45 for SNMP

Regd. Office & Works

Plot No. A-1/2/A, Industrial Park, Industrial Development Area, Uppal, Hyderabad - 39, AP (India)

Phone : +91-40-27204730 / 4873 / 4874, Fax : +91-40-2720 4731

e-mail : info@teamengineers.in

www.teamengineers.in