

Managed & Un-Managed Fast Ethernet Over 16E1 Converters

Teamlink 3116 Ethernet over PDH converter uses the next generation PDH technology such as generic framing procedure(GFP G.8040), Virtual concatenation (VCAT G.7043) and link capacity adjustment scheme(LCAS G.7042).



MANAGEMENT

SNMP-based element management software provides SNMP traps, status polling, and configuration. Remote element management is available in Teamview EMS.

The devices are managed in-band or out of band from the Fast Ethernet user port or via the TDM port. Management traffic and user Ethernet traffic are transported together on the same Ethernet flow, separated by different VLANs, thus ensuring traffic security based on port based or tag based VLAN.

FEATURES

- Connect Fast Ethernet LANS over E1 circuits
- E1 port Enable / Disable Selection.
- Inband and out-of-band management access vis:
 - ASCII terminal
 - Telnet
 - SNMP
 - Teamview - EMS
- Wire-speed packetforwarding
- 4-levels of QoS, based on four VLAN priority queues as per 802.1p
- Ethernet Frame size settings
- VLAN Tagging Un Tagging.
- MAC table Display
- Ethernet framesize settings
- Ethernet transmit,Receive,Collision and error packets display
- Ethernet Rate Controle.
- Special tag for the management traffic that will transmit in the same traffic to ensure the inband management functions.
- Enables the higher bandwidth capacity Ethernet Services to Remote locations.
- TEAMLINK 3104 uses next generation Ethernet Over PDH network protocols like GFP(G.8040), Virtual Concatenation (VCAT G.7043) and Link Capacity adjustment scheme (LCAS G.7042).
- Inter operable with the any device which is using the standard Protocols like GFP,VCAS,LCAS for connecting.
- VLAN - aware and VLAN - Unaware operation.
- Wire speed packet forwarding based on No.of E1s.
- Delay Compensation up to 255ms among the E1.
- Self-Learning Ethernet Briding
- QOS based on VLAN Priority.
- Enable DHCP client will automatically Obtains the IP address, Mask, gateway to minimize the installation time.

Managed & Un-Managed Fast Ethernet Over 16E1 Converters

DISCRIPTION

- Teamlink-3116EE is intelligent converter connecting Fast Ethernet LANs over E1 circuits. They enable service providers and ISPs to supply Transparent Ethernet services, without interfering with user traffic.
- The 802.1p priority scheme enables user to define four different QoS levels, according to the application requirement.
- The Fast Ethernet bridge handles frame size settings to 1522, 1526, 1654, 1784 bytes.

Sends Alarm notification to Manager IP address for the following

- E1 : Up/Down
- Ethernet : Up/Down
- Loopback : On/Off
- If the ethernet error packets or collision packets are reached more than threshold values.

SPECIFICATIONS

E1 INTERFACE

- **Number of Ports** : 16
- **Compliance** : G.703 / G.704
- **Data Rate** : 2.048 Mbps
- **Line Code** : HDB3, AMI
- **Line Impedance** : 120 Ohms, balanced
- **System Clock** : Internal or loopback timing
- **Diagnostics** : Remote and local loopback
- **Connector** : RJ-45

ETHERNET INTERFACE

- **Type**: 10/100 Base-TX and 100 Base-FX Mbps auto negotiation, full/half duplex, flow control.
- **Compliance** : Confirms to the relevant sections of IEEE 802.3 and 802.3U
- **Connector** : RJ-45 and LC type for fiber.

GENERAL

INDICATORS

- PWR – Power status.
- E1 Los – Los of E1 signal.
- Link1 – Fiber Ethernet Port Link.
- SPD1 – Fiber Ethernet Port Speed.
- LINK2 – Copper Ethernet Port Link.
- SPD2 – Copper Ethernet Port Speed.

WAN PROTOCOL

- **TEAMLINK 3116** uses next generation Ethernet Over PDH network protocols like GFP(G.8040), Virtual Concatenation (VCAT G.7043) and Link Capacity adjustment scheme (LCAS G.7042).
- **Type** : GFP(VCAT & LCAS)
- **CRC Type** : 16 or 32 bit selection.

POWER

- **AC** : 100 to 240 VAC (+10%), 50 to 60Hz
- **DC** : -48 VDC (+10%)

POWER CONSUMPTION : < 2W

ENVIRONMENT

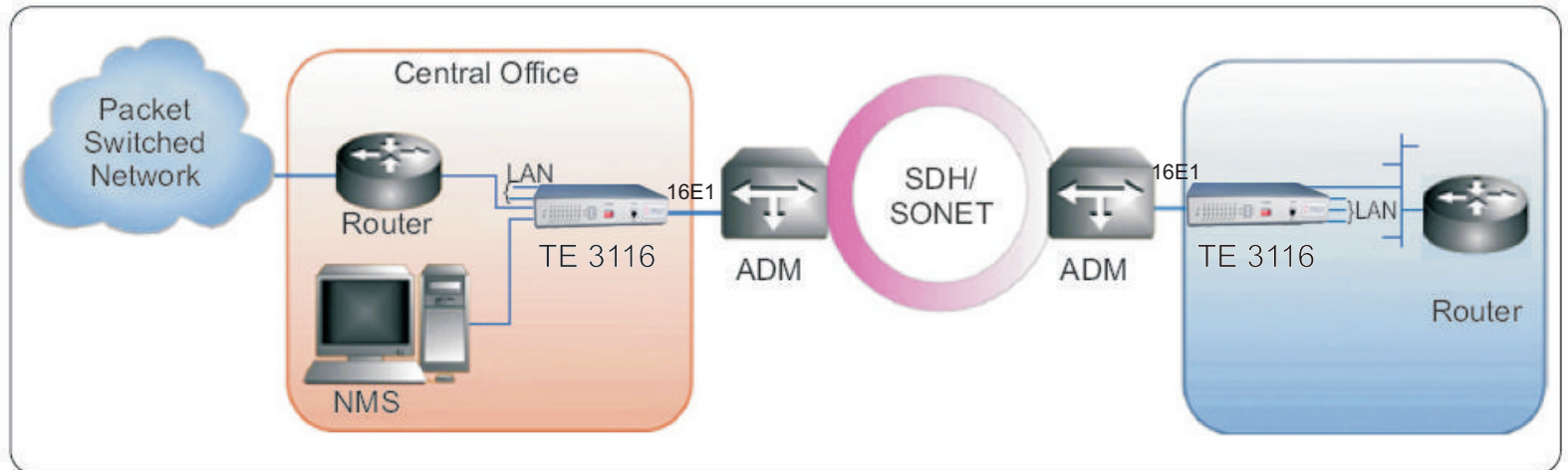
- **Temperature** : 0 - 50°C/32 - 122°F
- **Humidity** : Up to 90% non-condensing

PHYSICAL

- Height :
- Width :
- Depth :
- Weight :

Managed & Un-Managed Fast Ethernet Over 16E1 Converters

APPLICATION DIAGRAM



ORDERING

- Teamlink 3116EE Un-Managed Fast Ethernet over 16 E1 converter.
- Teamlink 3116EE Un-Managed Fast Ethernet over 16 E1 converter with PoE
- Teamlink 3116EE Managed Fast Ethernet over 16 E1 converter.
- Teamlink 3116EE Managed Fast Ethernet over 16 E1 converter with PoE
- SUPPLIED ACCESSORIES.
- AC/DC power cord or adapter plug
- Interface adapter for converting a balanced E1 RJ-45 connector to a pair of BNC unbalanced coaxial connectors supplied when ordering E1 unbalanced option.
- FX port is Ordering time Optional.